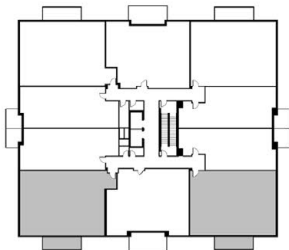




WELCOME



PLAN B2

3 BEDROOMS
FLOOR 2

1550 SF INDOOR
140 SF OUTDOOR

1690 SF TOTAL

Contemporary and Comfortable Living

Discover a place to call home. A place which enhances every day experiences through, stunning natural views, generous amenities and thoughtfully designed spaces. The Charles I offers residents the opportunity to embrace and enjoy each day in a beautiful setting reflecting the ocean and the trees.



For details and leasing information please contact:
Gineen Thomas, Leasing Agent, Universal Realty Group
902 802 2592 or email thecharles@universalgroup.ca